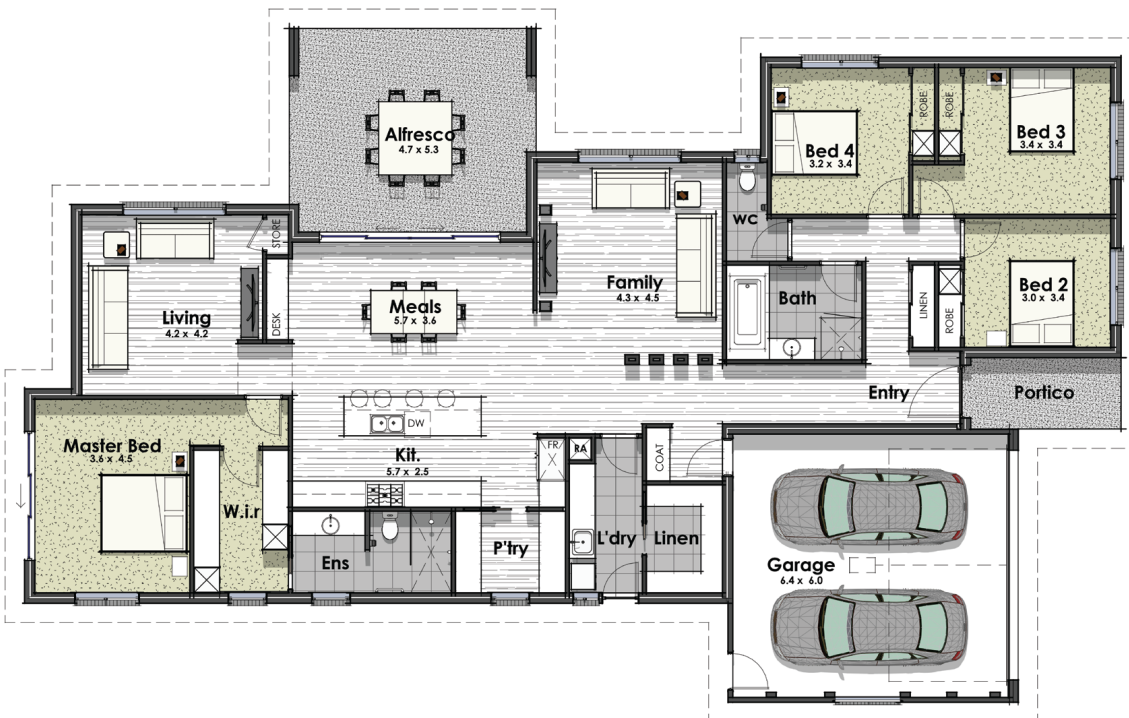




REGIONAL RENDER | Renders are for indicative purposes only and standard façade is included in base price.



15.66m 25.47m



 4
  2
  2

Living: 225.4m² = 24.3sq

Garage: 42.7m² = 4.6sq

Alfresco: 27.7m² = 3.0sq

Portico: 4.5m² = 0.5sq

Total: 300.4m² = 32.3sq

James Aiken | 0492 846 835 | lj.aiken@alatalobros.com.au