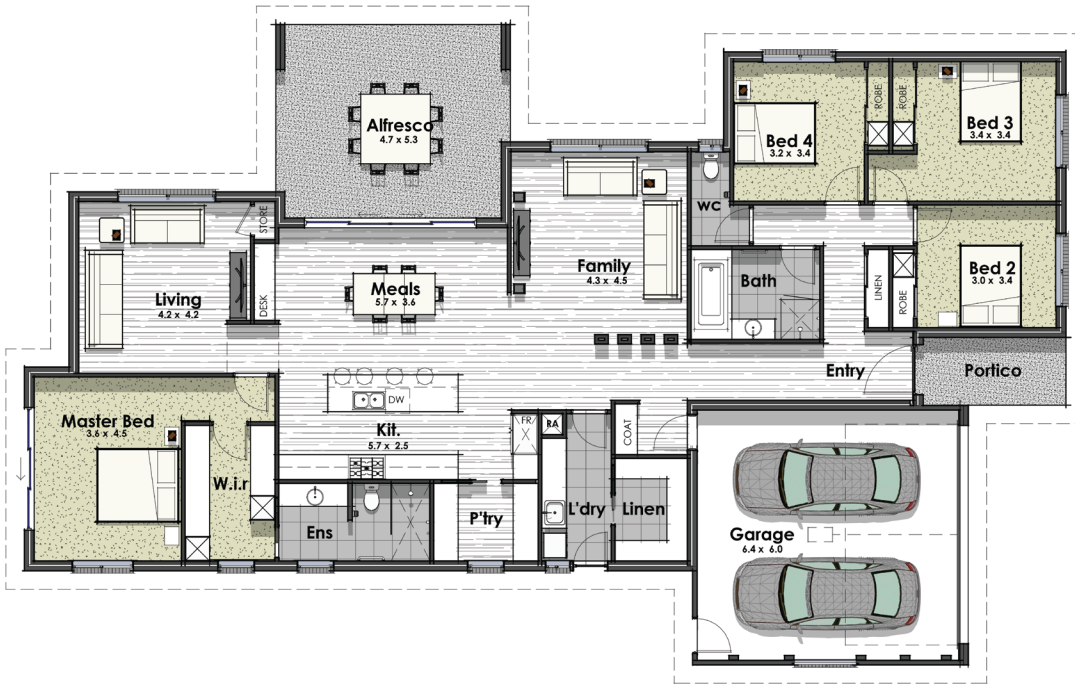




**CRAFTSMAN RENDER** | Renders are for indicative purposes only and standard façade is included in base price.



15.66m 25.47m



 4    
  2    
  2

**Living:** 225.4m<sup>2</sup> = 24.3sq

**Garage:** 42.7m<sup>2</sup> = 4.6sq

**Alfresco:** 27.7m<sup>2</sup> = 3.0sq

**Portico:** 4.5m<sup>2</sup> = 0.5sq

**Total:** 300.4m<sup>2</sup> = 32.3sq

James Aiken | 0477 551 959 | [j.aiken@alatalobros.com.au](mailto:j.aiken@alatalobros.com.au)