



Alatalo Bros

Quality Builders & Developers



Kingfisher Display

20 Rodeo Drive Thurgoona, NSW



4



2



2

Living Area: 245.4 m² (26.4 sq)

Alfresco Area: 31.2 m² (3.4 sq)

Porch Area: 12.3 m² (1.3 sq)

Garage Area: 44.4 m² (4.8 sq)

Grand total: 324.9 m² (35.0 sq)

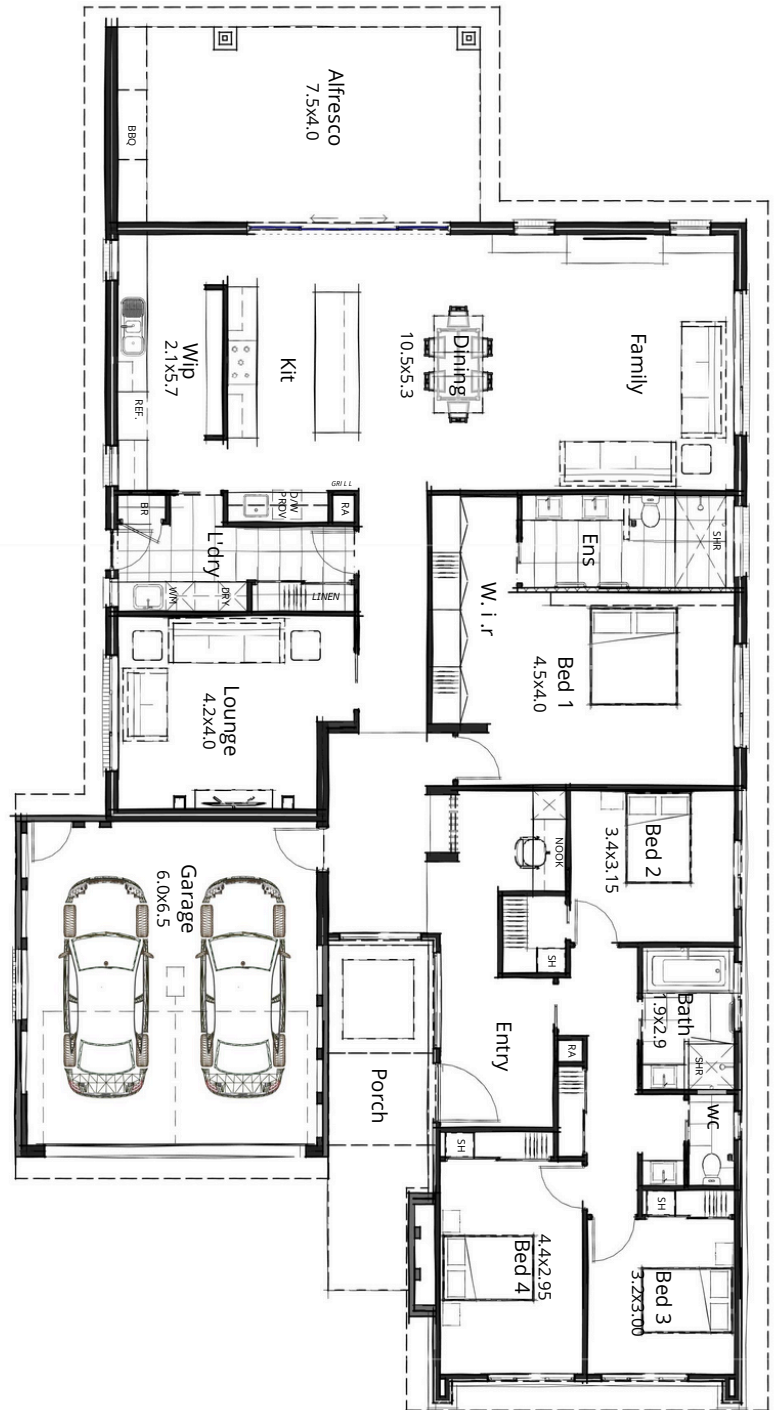
Experience Spacious Living!

Welcome to this spacious four-bedroom home designed for comfort and practicality.

Enjoy the separate lounge for quiet relaxation, or gather in the expansive family area that seamlessly flows into a modern, open-plan kitchen with a northern aspect.

The large alfresco area is perfect for outdoor entertaining, making it an ideal setting for memorable gatherings.

60 - 62 Hovell St Wodonga Vic
P 02 6055 0180
E sales@alatalobros.com.au
W: alatalobros.com.au



--- 15.10M

28.50M

Unlock Your Dream Home:

Michelle Brown

0422 599 866

michelle@alatalobros.com.au

Leisa Robb

0421 670 959

leisa@alatalobros.com.au